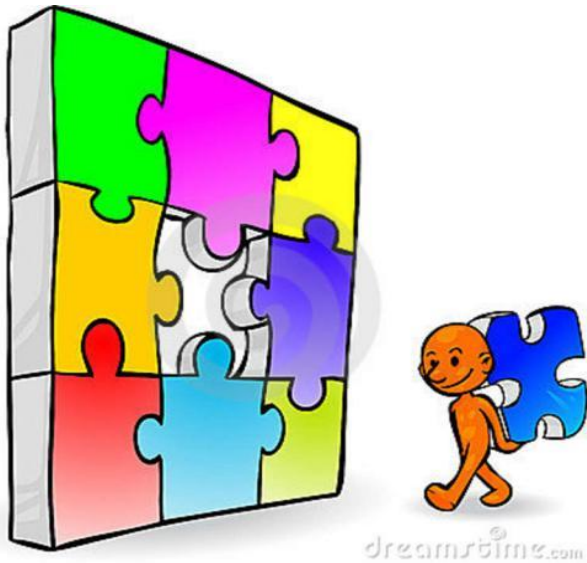
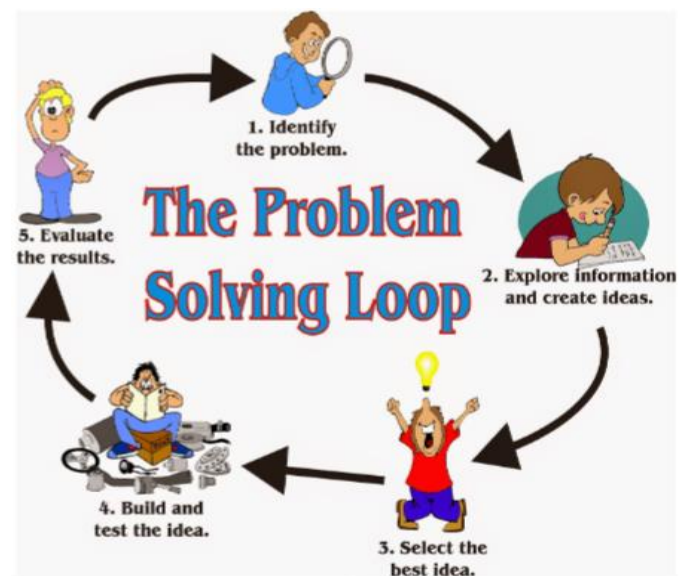


PROJECT BASED LEARNING



A dynamic classroom approach in which students actively explore real-world problems, challenges and acquire a deeper knowledge and understanding by creating projects and working as a team to collect, collaborate and think critically. Education is a journey, not a destination. Through PBL, we are empowering students to become critical thinkers.

1. The students and teacher find a real-life problem, issue, or theme.
2. Students take on a role for the project, possibly establishing a forum for display or competition.
3. Students, in groups discuss and gather the background information needed for their project.
4. The teacher and students negotiate the criteria for evaluating the projects.
5. Students accumulate the materials necessary for the project.
6. Students create their projects.
7. Students prepare to present their projects using various resources.
8. Students present their projects to the class/parents/teachers.
9. Students reflect on the process and evaluate the projects.



Nova Elm Academy (NEA)
44900 Acacia Lane
Suite #101
Sterling, VA 20166
571-313-1300

info@NovaElmAcademy.org
www.NovaElmAcademy.org